

# ADVANCED ENERGY TECH TIPS

## AIR SEALING BLOQUEO DE ENTRADAS DE AIRE

- Insulation, other than foam, will not stop air. El único aislante que evita el paso del aire es el de espuma.
- Blocking material should be rigid. El material para bloqueo debe ser rígido.

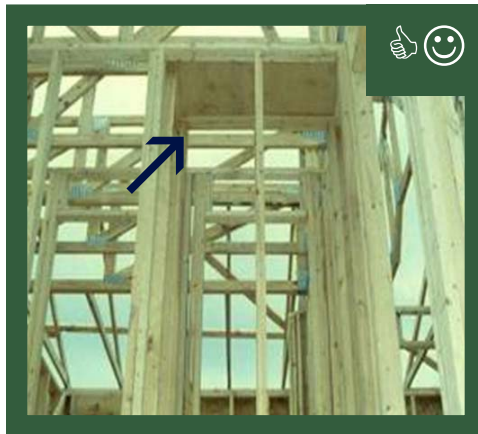
- The most important holes to seal lead to the attic and to the garage. Las perforaciones que conectan al ático y al garage tienen prioridad a la hora de bloquear entradas de aire.

  
**BAD**  
MAL HECHO

  
**GOOD**  
BIEN HECHO

### 1 Air seal all chases from unconditioned space with approved blocking

Separe por medio de sellar con el tipo de bloqueo aprobado todos los espacios entre pared



### 2 Air seal all HVAC penetrations

Selle todas las perforaciones para aire acondicionado y calefacción



### 3 Air seal all plumbing penetrations

Selle todas las perforaciones de plomería por arriba



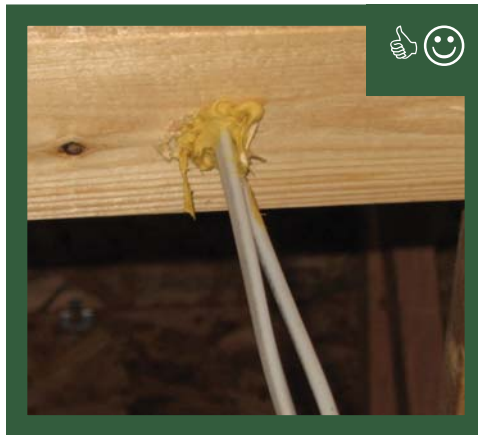
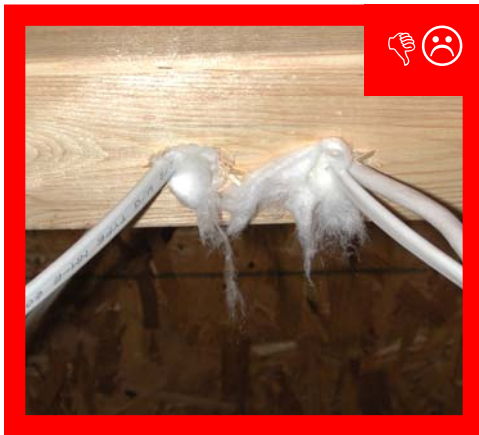
### 4 Air seal all plumbing penetrations

Selle todas las perforaciones de plomería por debajo



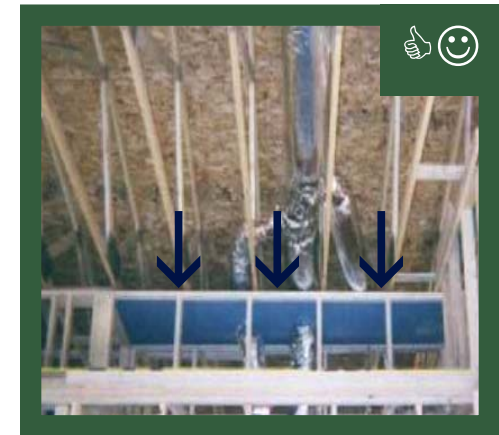
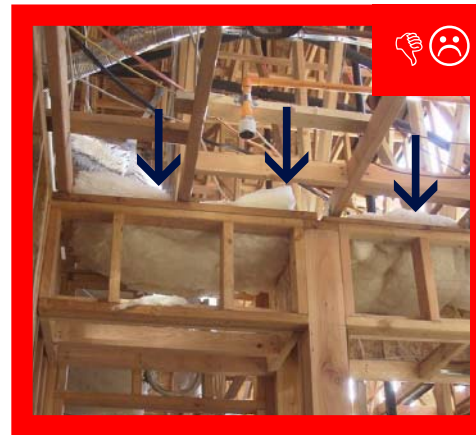
## 5 Air seal all electrical penetrations

Selle todas las perforaciones eléctricas



## 6 Separate dropped ceilings and soffits from attic

Separe el cielo falso y los aleros del ático



## 7 Ensure the home is completely air sealed from the garage

Asegúrese que la casa, sin incluir el garage, quede sellada completamente



## 8 Air seal bottom plate to subfloor

Selle todas las juntas al piso falso



### APPROVED MATERIALS (CHOICES MUST COMPLY WITH LOCAL CODE)

### MATERIALES APROBADOS (LO QUE ESCOJA DEBE CUMPLIR CON LOS CÓDIGOS LOCALES)

#### SEALANT TYPES

- CAULK
- FOAM GASKETS
- MASTIC
- SPRAY FOAMS

#### TIPOS DE SELLADORES

- CALAFATEO
- JUNTAS DE ESPUMA
- MASILLA
- ESPUMA EN AEROSO

#### BLOCKING TYPES

- ENERGY BRACE
- FOAM BOARD
- GYPSUM BOARD
- OSB
- SHEET METAL
- THERMOPLY
- WOOD / MADERA

#### TIPOS DE BLOQUEO

- LÁMINAS DE AISLANTE
- PANELES DE ESPUMA
- TABLA YESO
- REVESTIMIENTO OSB
- LÁMINA METÁLICA
- PANELES TÉRMICOS
- MADERA

## FOR MORE INFORMATION PARA MÁS INFORMACIÓN



909 Capability Drive, Suite 2100  
Raleigh, NC 27606-3870  
919-857-9000 | [www.advancedenergy.org](http://www.advancedenergy.org)

© 2005 Advanced Energy. 

**DISCLAIMER:** This material was prepared by Advanced Energy, a nonprofit corporation. Neither Advanced Energy, its member organizations, the acknowledged individuals, nor any person acting on behalf of them: (a) makes any warranty, express or implied, with respect to the use of any information, apparatus, method or process disclosed in this publication that such use may not infringe privately owned rights; or (b) assumes any liability with respect to the use of, or for direct or consequential damages resulting from the use of, any information, apparatus, method or process disclosed in this publication; or (c) has any liability for damages that result from any negligent act or omission involved in the preparation of the material. Any implied warranty of merchantability or fitness for a particular use is specifically excluded.