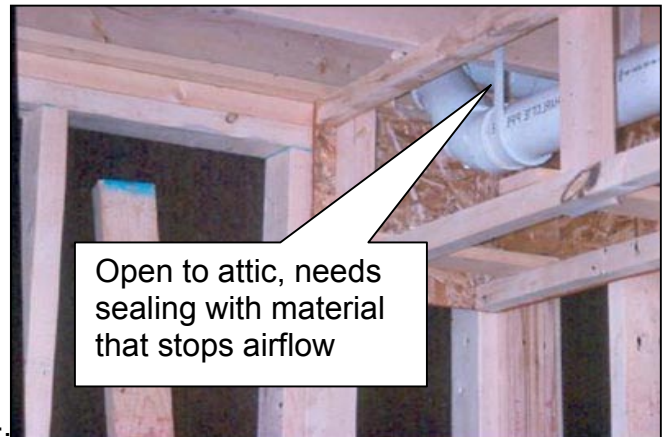
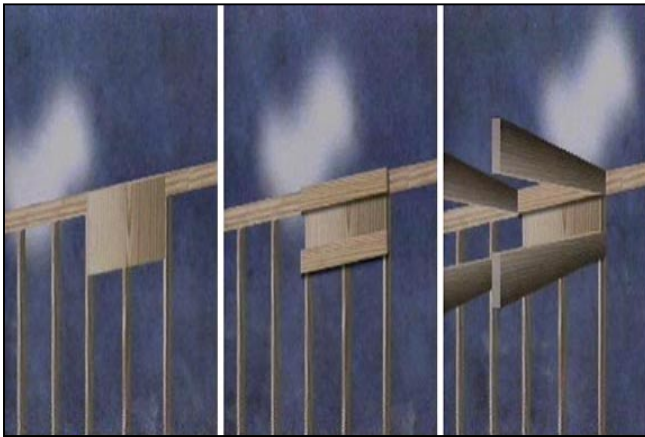


Soffits

Soffits adjacent to outdoors, attics and garages (as shown in pictures one and two) allow air leakage that can result in increased energy use and comfort complaints.



Pictures three, four and five show how these soffits should be separated from the exterior wall and ceiling with a rigid barrier such as Oriented Strand Board, plywood, Thermoply™ or sheetrock. All wiring, plumbing, or ducting that penetrate the barrier should be air sealed with materials that stop air leakage. Caulk, foam or mastic work very well to accomplish an airtight seal, whereas insulation chinked (stuffed) in the hole will not.



This separation permits the soffit to be within the conditioned space.

